



Until one has loved an animal, a part of one's soul remains unawakened.
— Anatole France



2008 ANNUAL REPORT

Letter from the Chairman



Lucy, Ginger & Sunny Gobin

As I begin my fourth year as a volunteer Director for the Animal Rescue League of New Hampshire, I am honored to serve as the Chairman of the Board. Sheila Steele, our outgoing Chairman, has much to be proud of as she steps down following seven years of dedicated service. During the time I served under Sheila, her positive energy and strong commitment to animal welfare impressed

me most. Her accomplishments were numerous, including her vision to improve the quality of life of the many cats rescued by the League, which was realized in late October 2008 with the opening of our new Feline Adoption Center. During their stay with us, our cats are now able to roam freely with a view of the outdoors or lounge in one of the many cat condos. Additionally, attributed to Sheila's leadership, the dog quarantine area will become a reality in 2009 and will allow us to save the lives of even more dogs and puppies without hope today. On behalf of the board of directors, staff, volunteers, and donors, thank you, Sheila, for your commitment.

As incoming Chairman of the Board, my mission will be to educate the public about how the Animal Rescue League of New Hampshire makes a difference in the many New Hampshire communities we serve. It is my hope that, through further education, we will be successful in expanding our Leadership Giving Program, which provides a long-term, dependable source of funding to support our operations. Today, our main source of funding is obtained through annual fundraising events, such as the Gala Evening of Compassion and our Auction; however, despite our sincere gratitude for the funds raised at these events, this source of funding is less stable and reliable, particularly during times of economic weakness. If you are not already a Leadership Giver, I invite you to join me and become one today. Every leadership gift supports a humane and healthy well-balanced community. To learn more contact Caroline Boyd at **603.472.5710** or caroline@rescueleague.org.

Lastly, I would like to recognize the strong leadership of Caroline Boyd, our President & CEO, as well as the generosity and support of our donors, volunteers, staff, and board of directors. Thank you all so very much! Together, we can create that well-balanced community, where we save the lives' of pets and they, in return, enrich ours.

Sincerely,

A handwritten signature in blue ink that reads "Lucy T. Gobin".

Lucy Gobin, Chairman of the Board

Dear Friends of the League –

With your support, we concluded an amazing year of saving lives and offering critical programs to our community. Despite climbing costs—especially veterinary costs for animals that came to us in poor health—and a 20% increase in incoming animals we were able to slightly decrease our cost per animal from \$503.92 to \$476.87 on average by continuing to seek efficiencies actively and by having relationships with wonderful providers that saved us money wherever possible.

We delighted in the adoption of some long-term residents, such as Rhone, who was here for 11 months before finding his new home, and Porkchop, also here for seven months. Now these animals—and hundreds more—are enjoying their second chance at a happy ending thanks to our community of animal lovers.

As we invite you to look back on 2008 with us, I hope you can get a sense of the joy of finding a loving home for a deserving animal, the fun that comes any time a group of staff and volunteers band together on a task, the pride that an organization can take in offering services to its community, the sense of awesome responsibility that



Caroline, Chino, Weenie & Panda Boyd

accompanies the stewardship of assets that have been given to save lives, and the hope that comes from watching a new generation develop compassion through interacting with pets through humane education or summer camp.

And if we can't give you enough of a sense of these things in these brief pages, I hope you will choose to come visit us at the League and experience these amazing things for yourself. We'd love to have you.

Thank you for all you do for our animals!

Best regards,

A handwritten signature in black ink that reads "Caroline Boyd".

Caroline J. Boyd, President & CEO

Mission Statement

Pets give us so much. They teach us compassion, protect our families, work as therapy professionals, and entertain us. Pets comfort us when we've had a bad day and touch our hearts with their unconditional love. At the Animal Rescue League of New Hampshire we save pets' lives, and they enrich ours.

Volunteers ARE the League

Why? Because we couldn't help over 1,800 animals per year alone!

Many times when talking about how important volunteers are at the League, we say, "volunteers ARE the Animal Rescue League of NH"! Without the help of almost 300 dedicated volunteers, we wouldn't be the shelter we are today.

For the past ten years, volunteer coordination duties at the shelter fell to staff members that had several other duties. Back in 1999, Maureen Prendergast was the Shelter Manager as well as the Volunteer Coordinator. In 2002, volunteer coordination passed to Robin (Ahlgren) McCune, who was the Assistant Manager and then became Development Director. Although Robin had a great love for the job and enjoyed meeting and getting to know the volunteers, by the summer of 2008 with so much growth happening at the shelter, she realized that she just could not do the volunteer job justice and continue to fulfill her fundraising responsibilities. After speaking with Caroline Boyd, the President & CEO, they decided it was time to bring someone on that could focus solely on volunteers without having any other duties at the League. The New Hampshire Charitable Foundation agreed, and provided a "starter grant" of \$5,000 to help fund the recruiting and transition of the role.

We started the search for just the right person, someone who could give all their attention to the volunteers and make sure that the program ran smoothly. After a short search, Laurie Galletta, a Goffstown native, came into the picture. She had the perfect background—she had experience, she was a huge animal lover, she had been a volunteer in several capacities, and she understood the immense job that she was about to undertake.

With Laurie on board, within a few short months we were able to start running more volunteer orientations (every three weeks instead of one a month) and we were able to start a "Mother's Hours" volunteer orientation (designed to help resolve our biggest challenge: finding volunteers to work Monday through Friday in the morning for cleaning duties).

We are thrilled to have finally taken such an important position and separated it from other shelter jobs so that volunteers will get the attention they deserve! We have already seen the benefit of a focused Volunteer Coordinator position, and going forward we will be able to accomplish more for the animals and hopefully expand some of the League's programs.

If you are interested in volunteering, please contact Laurie at **603.472.7800** or laurie@rescueleague.org.



Laurie Galletta, Volunteer Coordinator with volunteer dog walker Karin Doheny and Dolly the Chow Chow.

Extraordinary Volunteerism in Action!

Thank you to the following volunteers for working an amazing 300-plus hours in 2008:

Ken French	Rob Hagar
Roy Gilson	Gloria MacVane
Anne Greer	Linda McCarthy

We are also so grateful to our 13 volunteer Board Members, who so generously give of their time, talents and financial resources to ensure the League fulfills its mission.

We are also proud to share that in 2008, 276 people gave their time freely to volunteer at the League and accumulated 10,546 hours of volunteer service.

Thank you so much to everyone who has volunteered their time to save the lives of pets and improve the lives of the people who love them!



Cover Photo:

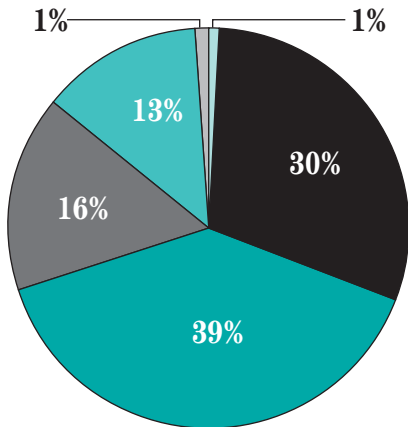
Pictured on the cover of the 2008 Annual Report is Doug Stuart and recently adopted senior Chow Chow mix Dolly. Doug has been a volunteer greeter at the Animal Rescue League of NH since October 2008. He was encouraged to volunteer after his daughter Heidi Chenette and grandson Nick had great volunteer experiences with the League. Doug has enjoyed the company of dogs, horses, and cats throughout his life. We appreciate Doug for his quick smile and humor!

Total animals adopted: 1,333. Dogs: 121, Puppies: 30, Cats: 648, Kittens: 421, Small animals: 113.

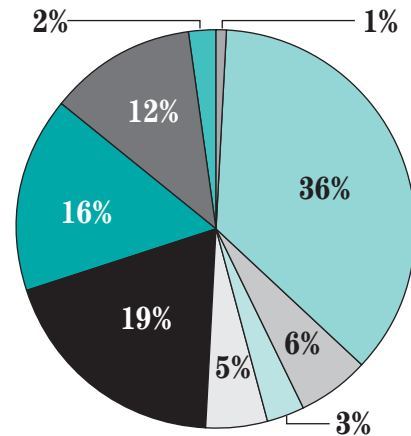
Managing Your Investments

Why? To connect pets (and people) in need with compassionate assistance!

2008 Sources of Funding



2008 Use of Funds



- Individual and Corporate Donations
- Fundraising Events
- Estate Giving: Wills and Bequests
- Shelter Services
- Interest, Dividends and Other Income
- Grants

- Animal Welfare and Sheltering
- Veterinary Care
- Community Programs
- Administration Services
- Fundraising
- Restricted Gifts for Quarantine/Kennels
- Bequests Invested in Endowment
- Restricted Gifts to be Used in 2009
- Total Available Operating



Last year we pledged to “be as thrifty as possible and invest your money appropriately.” We are very pleased to be able to report our 2008 financial results, which we believe demonstrate the fulfillment of this promise. We remain aggressive in our expense management

for the maximum benefit of the animals (and people) touched by our mission, and we continue to strive to be 100% transparent with regard to our use of funds. We believe that it is our role to earn your confidence each and every day so that you will continue to partner with us in making your own compassionate vision for pets in need a reality.

In 2008, the League’s programs and services cost \$2,359.55 per day to operate. While this cost is up 14% from 2007, we were able to take in 20% more animals, adopt out 18% more animals and provide significantly more major medical care. In fact, our average cost per animal actually decreased 5%, from \$503.92 in 2007 to \$476.87 in 2008.

Adoption fees cover only 14% of our cost—the rest comes from our community (we receive no federal or state funding). Each year we depend on you for the funding to fulfill our mission.

As we face a challenging economy in 2009, we expect to see even higher levels of surrendered animals with more medical neglect. Please consider making the League’s mission one of your giving priorities in 2009. For information on ways to give, please contact our CEO, Caroline Boyd, at 603-472-5710 or caroline@rescueleague.org.

2008 Operating Expenses and Revenues (unaudited)

Sources Of Support:	Amount	% of Total
Individual and Corporate Donations*	\$ 369,475	30%
Fundraising Events*	484,367	39%
Estate Giving: Wills and Bequests	196,961	16%
Shelter Services	158,317	13%
Interest, Dividends and Other Income	14,792	1%
Grants	17,360	1%
Total Income:	\$ 1,241,272	100%

*Includes \$196,984 in capital contributions for construction of quarantine and future kennel improvements.

Total Expenses:	Amount	% of Revenue
Animal Welfare and Sheltering	\$ 446,811	36%
Veterinary Care	76,529	6%
Community Outreach	33,324	3%
Administration Services	65,410	5%
Fundraising	239,162	19%
Total Expenses:	\$ 861,236	

Other Use of Funds:	Amount	% of Revenue
Net Difference (Revenue Less Expenses)	\$ 380,036	31%
Restricted Gifts for Quarantine/Kennels	(196,984)	16%
Bequests Invested in Endowment	(151,707)	12%
Restricted Gifts to be Used in 2009	(20,441)	2%
Total Available Operating Funds to Carry Forward	\$ 10,904	1%

Animals taken in total: 1,806 (up 20% from 2007). Dogs: 276 – up 21%, Puppies: 59 – up 28%, Cats: 801 – up 12%, Kittens: 539 – up 25%, Small animals: 131 – up 56%.

Finding Balance

Why? To ensure your support does the greatest good possible!



“**Finding Balance**”: an often used phrase for a common goal that can be particularly hard to achieve. Maintaining the proper balance in a field that exists largely because of societal imbalance is a challenging topic, and finding balance within the shelter’s medical program has its own challenges.

On one side of the scales, we have to maintain “herd health”. Housing dozens of dogs and hundreds of cats requires us to think of the popula-

tion as a whole and manage disease carefully. One animal with a highly contagious and dangerous illness may be simply too risky to bring into the shelter. Though we may be able to assist that one animal, we would be putting hundreds of lives at risk.

On the other side of the scales, looking at individual animals can be just as challenging, if not more so. Though the majority of animals that pass through the shelter require nothing more complex than a basic physical, a series of vaccines, de-wormers, blood tests and spay/neuter surgery, there are still many that will require advanced diagnostics and or treatment, from x-rays and broken legs, to mass removals, full dentals with extractions, eye surgeries, ultrasounds, ACL surgeries, and heartworm treatment to name but a few. We tackle each of these cases as individuals, working hard to determine whether an animal can be saved and

ultimately make it up for adoption and into a loving home. This process is resource-intensive—it is expensive, time consuming, and involves many staff people and local Veterinarians from the beginning to the end.

To achieve our ambitious goals we utilize the assistance of many local professionals, our “Medical Miracle Workers”. These partners include **Daniel Webster Animal Hospital** (which not only offers our animals a wonderful discount at their clinic but also have a rotation of their Veterinarians doing rounds through the shelter every other week) and **Merrimack Veterinary Hospital** (which also offers us a discount on services as well as doing shelter visits, financial sponsorship and in-house education for staff and volunteers).

There is also **Ponemah Veterinary Hospital** and **Best Friends Animal Hospital**, which offer their in-house services at a discount but also help us keep up with our spay/neuter schedule when things get busy. **Wilton Animal Hospital** has hosted a few special-circumstance surgeries at a discount, and last but not least, **Northside Animal Hospital**, where a long time supporter of the League oversees our program and hosts animals for adoption at their clinic. Without the assistance of these fine doctors and hospitals we could not offer nearly the same quality care to nearly the same volume of animals each year, and each Veterinarian who offer their services for free or at a great discount translates directly into money that can be spent on the next sick or injured animal. A special thank you to all the veterinary professionals who support our mission.

YOU Can Make a Real Difference!

Please Join Our List of “On-Call” Medical Miracle Workers!

Our medical network may sound like a lot of help—and it is! Still, there is no telling what medical issues will walk through our doors on any given day and constrained resources force us to make difficult choices. This year we are piloting our Medical Miracle Worker program. We are asking people who have an interest in being “on call” to help with extraordinary medical cases to let us know they would like to help. Then when a medical issue arrives at our door, we will have a list of supporters to go to for assistance in funding specific procedures (usually surgeries).

If you or your organization is interested in joining these Medical Miracle Workers in this crucial life-saving program enabling us to help more animals and save more lives please contact Caroline Boyd at **603.472.5710** or caroline@rescueleague.org.



Lottery's \$400 dental surgery was sponsored by someone who learned of his plight and stepped in to save the day!

Total strays: 413. Brought in by public: 64% (263 - mostly (85%) cats). Brought in by police: 23% (94 - mostly (89%) dogs). Abandoned at ARL 14% (56 - mostly (79%) cats).

From Vision to Reality: “Dillinger’s Dorm” is Built

Why? To see cat quality of life and visitor enjoyment skyrocket!



Picture warm sunlight streaming in through the windows, cats curled up in pillow-beds or climbing structures that allow them to be up high and see the world around them, and best of all the ability to be free! This may sound like the cats

in your home, but we are talking about the League’s shelter cats.

October was the grand opening of “Dillinger’s Dorm”, our new feline adoption center. This new center was made possible by generous donations made at the Fund-A-Need portion of the 2007 auction as well as generous lead gifts by Roger and Francine Jean and Gloria MacVane. In total, \$194K was donated to make this feline dream possible. The new center can hold more than 80

cats and meets more of a cat’s behavioral needs. Cats that can be housed with other cats get to live in a spacious room full of beds, toys, and plenty of structures to climb and scratch. Cats that don’t like the company of other cats are still happy with their individual housing in this new sun-filled room with views of the outdoors. Not only are the shelter cats happy, but so are the shelter visitors. People come in to visit and spend some quiet time with the cats. Each colony room features a park bench for people to sit down, relax, and enjoy the company of our feline residents.

This new feline adoption center has made such a positive impact on shelter cats, shelter staff and volunteers, and the visiting public. The shelter has been uncommonly busy in the last couple of months and hopes to continue this trend and adopt out even more animals (our adoption rate increased 57% on average after opening). If you have not been by to visit the new feline adoption center, please feel free to stop by at your convenience. The cats—and the staff—welcome your visit!

Supporters’ Gifts Are Building a Quarantine Facility

Why? To save even more lives and protect local pets’ health!

They come in all sizes, shapes, breeds and dispositions and some of them are a risk to those around them. Serving the animals of our communities with no homes often means taking in animals with contagious disease. Some of these diseases take time to diagnose, others are clearly visible, and some need to be presumed and ruled out. To facilitate this sorting and treating in a safe and responsible manner we have to quarantine certain animals away from the others. Until recently, true separation of healthy dogs from sick ones was a challenge to say the least. We would utilize rooms not intended to house dogs, keep them at a veterinarian’s office and (in order to facilitate safe and responsible transport from other states, we established an off-site quarantine at a volunteer’s home.

Due to the overwhelming success of last year’s Fund-A-Need, (part of the Auction where we highlight a single item or project that for which we hope to raise funds), we are approaching the completion of a true, in-house, dedicated quarantine area. The area that we are utilizing was our Cat Adoption room until last October when our new feline adoption center opened in the front of the building. The new self-contained quarantine will boast its own exterior door, a dedicated air handler, an air lock room between the animal care area and the rest of the shelter, completely washable walls, five isolation dog kennels, a puppy pen, and two banks of cat cages. Upon completion of this area we will finally have the facility necessary to safely house dogs in need of quarantine, such as those dogs and puppies that we have transferred up from the South where dog overpopulation

is so great that they are forced to euthanize even adoptable animals while many adoptive homes wait for pups in the Northeast.



Saved from euthanasia in the South, transport puppy Maggie (r) relaxes with new brother Berkley in her new home. Quarantine will help us save more “Maggies”.

Left: With the old door sealed for the quarantine facility, our former “Cat Town” is transforming to a small animal pavilion.

Return rates: Dogs: 7%, Puppies: 0%, Cats: 11%, Kittens: 3%, Small animals: 9%. Most common reason for returning an animal: Temperament (15%).

Serving Our Community

Why? Because not all animals in need live at the League!

At the Animal Rescue League of NH, it is our goal to be a productive community partner, responding to the needs of our community's animals and the people who love them. As such, we have a number of programs operating somewhat quietly to try to serve those in need.

Our Animal Cruelty Investigator has a favorite saying, "We can't be a shelter just to those animals that can get to us." As a result, she spends much of her time on the road and in the community investigating complaints, reaching out to families in need by providing dog or cat food, and even testifying for proposed animal welfare legislation.

In addition to the League's **Animal Cruelty Investigation** and **Community Outreach** program, we also have three other major community efforts in place: **Spayapalooza**®, the **Companion Animal Assistance Fund (CAAF)** and the **Safe Haven** program.

Offered approximately every six weeks, Spayapalooza® offers low-cost spay/neuter and routine vaccinations to the pets of families who qualify for state aid or fuel assistance, promoting the animals' health and the prevention of unwanted litters. Services are provided for a co-payment of \$25.

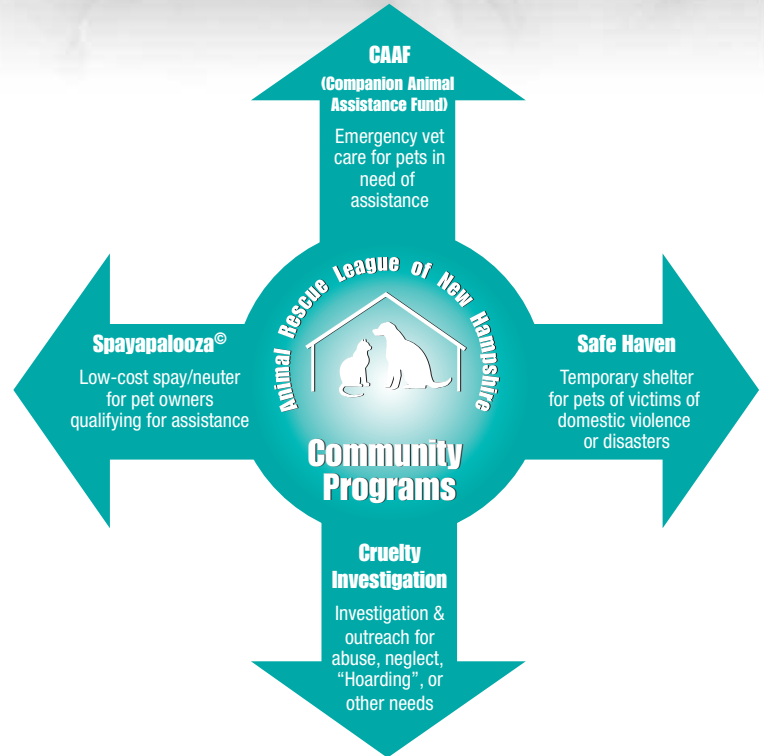
The CAAF offers emergency veterinary assistance to families whose income allows them to care for their pets responsibly on a day-to-day basis, but who have a veterinary need that they cannot afford. In many instances, these families would have to give up their beloved pets to get them needed care, so the CAAF allows the pets to stay in a loving home and ensures more shelter space is available for "truly homeless" animals.

Finally, the Safe Haven program offers temporary protective custody to the pets of victims of displacement due to domestic violence, disasters such as floods or fires, or other sudden relocation reasons. In 2008 four cats and two dogs were Safe Haven program participants—three cats were related to fires, one cat was because of an eviction, and both dogs were due to a serious domestic assault.

For more information on any of these programs, please contact Maureen Prendergast at maureen@rescueleague.org or 603.471.0888.

By the Numbers:

- **Spayapalooza**® - 164 pets (116 cats and 48 dogs) belonging to 100 families were altered and vaccinated.
- **CAAF** - 23 pets were provided with 27 emergency vet visits costing a total of \$6,606.57.
- **Safe Haven** - 4 cats and 2 dogs were offered shelter and protection for stays ranging from four days to seven months.



2008 Customer Service Report Card

The average of all 2008 satisfaction surveys shows our commitment to animal lovers as well as to animals, scoring an "A" in all categories.

(Scale: 4 possible points)

Adoption Counselors...

Were knowledgeable	3.7
Helped make the best match	3.7
Took enough time with me	3.6
Gave me info on introducing my pet to my home	3.7

Intake Counselors...

Understood and empathized	3.8
Gave info on ways to keep pet (if not a stray)	3.6
Gave info on what would happen to my pet	3.8

Total strays reclaimed: 108. Dogs: 102, Puppies: 1, Cats: 4, Kittens: 0, Small animals: 1. Positive outcome percentage: 89%.

Our deepest gratitude is extended to...

Due to space limitations we were not able to print a complete list of all 2008 donors. For a complete list of donors please visit our web site at: www.rescueleague.org

* Indicates Board Members during 2008 ♦ Indicates Staff Member

LEADERSHIP GIVING PROGRAM

Members of the Leadership Giving Program have contributed or pledged to contribute \$1,000 or more to the League annually for a period of at least three years.

CAPITAL CONTRIBUTIONS

Our new quarantine area, currently scheduled for completion in the spring of 2009, was encouraged through the initial capital contributions of the following Leadership Giving Members:

Anne & Boyce Greer

CIRCLE OF COMPASSION

Guardian of the Future (\$20,000 and above)

Dana * & Thomas Boucher
Anne & Boyce Greer
Gloria MacVane
Sheila * & William Steele

Humane Visionary (\$10,000 - \$19,999)

Robert & Jennifer Grunbeck
Roger * & Francine Jean

CIRCLE OF SUPPORT

Rescue Leader (\$5,000 - \$7,499)

Anonymous
Joseph & Lynn Esposito
Richard & Karen Leone
Robert F. Smith, Jr. *

Animal Advocate (\$2,500 - \$4,999)

Anonymous
Joanne & Fredric Boswell
Caroline Boyd ** & Doug Tricarico
Lucy Gobin *
Dr. Denis and Sheryl Hammond *
Walter & Shirley Hemming
Stanley Miastkowski & Kathleen LaRiviere
Robin * & Peter Milnes
Cynthia & Steven Rizzo
Anne * & Edward Rzegocki
Dr. Thomas Sheldon & Dr. Lisa Kennedy Sheldon *
Barbara Stone

Loyal Companion (\$1,500 - \$2,499)

Linda & Dennis Beaulieu
Pauline Brine
David & Kathleen Dankulich

Gertrude & Richard Desmarais
Lissa * & William Foote
Martha Anne Goodwine
Valerie Greene
Jim Hendrix * & Cyndi Carr
Barbara & Preston King
The Leek Family
Todd & Monica Leo
Timothy & Judi Root
Joan & Walter Shute
Karen * & Peter Tebbenhoff
Ronald & Patty Tricarico
Dr. Randy Viola & Dr. Judi Whitcomb
Frederick * & Gina Weismann

Pet Patrons (\$1,000 - \$1,499)

David & Susan Benson
Ann & William Duschatko
Jennifer Eber * & Gordon MacDonald
Jill & Joseph Exner
John & Gerardine Ferlins
Roy & Martha Gilson
Jane Hager
Ruth McGrath
Ruth & Norman McKinstry
John & Susan McNulla
David & Melinda Penrose
Thomas & Diane Riley
Karen & Agustin Rios
Dr. Richard & Jayne Spaulding
Alison & Henry Stebbins

2008 GIFTS

\$10,000 and above

Dwight & Helene Churchill
Gregory & Adele Molloy

\$5,000 - \$9,999

Anonymous
Barbara Patterson

\$1,500 - \$2,499

Judith Blanco
Beth Margenau
Dean Morrison & Diane Dumouchel Morrison
Marie Panciocco & Paul Salerno
G. Michael & Denise Slovak

\$1,000 - \$1,499

Anonymous
Richard & Susan Castaldo
Thomas & Joanne Fatur
Patricia Ann Finos
Madeleine & Adam Fishman
Kathy & William Gillett
Hugh & Shana Griffiths
Scott & Mary Ellen Hettinger

Dr. Gordon & Kathy Loveless Jr.
Maureen McDonald
Chester & Janet Milnes
Daniel & Joy Monfried
Michael & Donna O'Keefe
Joyce Pearson
Deborah & Dennis Peck
Chris & Christina Rowen
Michael & Judith Salter
Eleanor & Anthony Spinazzola
Joel Stave & Cynthia Weber Stave
Veronica & Eugene Van Loan
Jaimee Walters & Dr. Eliot More
Robert & Penny Warren
Wayne & Teri Williams

\$500 - \$999

Jeanne Arquette-Koehler
William & Deborah Baker
Shirley Barron
Lynne & Eric Bernard
Dr. Joseph & Michelle Bianchi
Alan Bingel & Erika Browning
Margaret Brown
Sylvia Budd
Priscilla Carlson & Peter Gallup
Valerie & Robert Carmichael
Laurie & Richard Cesati
Kathy Cyr
Holly Cyr
Thomas & Joyce Dailey
Beverly & David Dantos
David & Sally DeVries
Andrew & Stephanie Dubowyj
Maureen Eschenbrenner
Deborah Gagnon
Bonnie & David Gallant
Nancy & Paul Granada
Patricia & Arnold Halbert
Joy Hammond & Michael Elmes
Paul Handwerker
Dr. Barbara Heald & Mark Fowke
Rosemarie Heelon
Linda Hersey
Ruth Jamke
Jon & Jean Jones
Ann & Joe Kearns
Stephen Kenda
Marie & Raymond Kohler
Lisa & Robert LaPage
Meryl Levin * & Will Kanteres
Thomas Taylor & Nancy Lockhart
David & Rosamond Lockwood
William Luke
Thomas & Sheryl Maida
Virginia & Christopher McCloy
Janet & Reginald Mills
Bruce Morrison
Marcelle & Brian Morton
Louise & Karl Norwood
Linda & Patrick Obertin
Steven & Pamela Patterson
Dr. Robert Petersen & Dr. Cheryl Bowser Petersen
William J. Powers, Jr.
Arlene Ready
Kathleen & David Redlund
Rodny & Faye Richey
Sen. M. Sheila Roberge
George Rose & Mary Beth Whittington
Phillip Rutledge & Hannah McCarthy

Howard Seaver
Timothy & Jenna Sievers
Kathleen & Danny Sims
Sharon McGowan Spinelli
James & Justine Stamp
Peter & Lissa Stepanek
Deborah Stone
Frances Straccia
Nancy Sullivan
William & Susan Tucker
Pamela VanArsdale & Robert Dewey
Paul Vavra
Wendy Waterstrat
Jerry White & Linda Hood
Jennifer Whitlock
Sherman Wolf
Merrill & Judy Wright

\$250 - \$499

Gertrude & James Anderson
Tom & Kay Anderson
Stephen & Debbie Bailey
The Baity Family
Ted Bantis & Laura Charest
Elli Beane
David Bellman
Ellen & Marc Benson
Marc & Susan Berube
Norm & Camille Bowlin
Paul Boykas
Michael & Kathryn Brown
Joseph & Aline Caiado
Richard & Cheryl Cesati
Pamela & David Charron
Lynn Marie & Robert Chesebrough
Arthur & Dorothy Chicaderis
James Clark
Laurie Colaneri
Catherine & L. Joseph Comeau
Kenneth & Vita Cooper
Norma Corey & Susan McDonald
Alvin & JoAnn Corzilius Jr.
Kristi Couch
Kim Fusaris & Paul, Nick & Chris Couto
Stephen & Teresa Dainesi
Shirley & James Delacoe
Christine & Paul Deroche
Michele Desmond & Kathleen Conroy
Joan Duda
Patricia Duval
Olivia Edvalson
Mary & Brian Edwards
David Farnham
Don Fischer
Colleen Fleming
Rock Fleury
Albert & Christine Fontneau
Jacquelyn & James Gallagher
Mark Gashi
Annette Gauthier
Nancy & Leonard Gerzon
Philip Gilbreth
Alexandria & Robert Goff
Joseph & Karen Graham
Joseph & Charlene Grecco Jr.
David & Jodi Greene
Richard Kennerly & Linda Hamada *
Scott & Kimberly Hamilton
Thomas & Joanne Head III
Jacqueline & Kenneth Hepworth

Top 5 towns for incoming animals: Manchester (37%), Bedford (10%), Milford (7%), Merrimack (6%), Amherst (4%). Towns served: 67.

Susan Alicia Hilburn
 Lester Boyce
 H. William & Donna Horan
 Christy Houpis
 Renee Hulitar
 Dr. Theodore R. Jacobs
 Betsy & Dale Jancic
 William & Elizabeth Jennings
 Linda & Tony Johnson
 Jean & David Jones
 Peter Jones
 Richard Kaeser
 Karen & Gregg Keary
 Vincent & Christine Kenny
 Evelyn & George Kenson
 Richard & Audrey Kincaid
 Dr. Kenneth Komisarek
 Joseph & Louise Komisarek
 Robert & Elaine Lavoie
 Linda & Richard Lavoie
 Loi
 David & Amy Martin
 Christina & Douglas McAllister
 Linda McCarthy
 Ruth McLaughlin
 Lisa Melancon
 Martha & Clifford Miller
 Sharon Moore
 Andre & Pamela Morneau
 Lisa-Marie & David Mulkern
 Matt & Roxanne Neuman
 Kenneth & Donna Oaks
 Thomas Olsson & Anna Oscarson
 Stacey Pawlik
 Karen & Gary Pennington
 Richard & Constance Perry
 Richard & Elaine Petersen
 Henry Phillips
 John Pirog
 Peter Prevett
 Raymond & Terry Prouty
 James & Sarah Ramsay
 Steve & Deb Reichheld
 Joseph Remson
 Clifford & Heather Rice
 Christopher Richter
 Brian & Mary Robinson
 B. Thomas & Sandra Rodgers
 Americo & Diane Roma
 Gerard Rowan
 Sarah & Malcolm Salls
 Michelle Sampson
 Sherryl Scott
 Eric & Donna Seidel
 Jeffrey Shagory
 Irene Shepard
 Karen & Joseph Slattery
 Carroll & Bette Smith
 Dr. Gregory & Brenda Soghikian
 Barbara & Robert Spitz
 Lyn & Don Staffiere
 Ryan Storey
 Teresa Swanson Geib & Eric Geib
 William & Carolyn Swift
 Phillip & Julie Taub
 Rich Telgener
 Eugene Thomas
 Constance Thompson
 Ruth Turlis
 William & Rhonda VanBeusichem
 Jeremy & Karen Veilleux

Maurice & Aurore Villeneuve
 James Walter
 Michael & Ninette White
 Eileen Wickey
 Gregory Witham
 Lisa Yesse

\$100 - \$249

Anonymous
 Anonymous (BECFI)
 Anonymous (Liberty Mutual)
 Jody Albertini
 Kathleen Albuquerque
 John Alexander
 Tamarie & Michael Allard
 Robin & Keith Allberg
 Carol & Michael Alperin
 Beverly Amery
 Richard & Aileen Anderson
 Kathleen Angel
 Sid Anthony
 Michael & Lynda Aramento
 Stanley & Renate Arnold
 Evelyn Arute
 Cheryl & Ben Asselin
 Patrick & Cheryl Azzerone
 Audrey Babicz
 Holly Bader
 Diane & Michael Badzinski
 Joan & Jim Bajek
 Diann & John Ball III
 Elaine Barnea
 Laura Barnes
 Michael & Sharon Beaulieu
 Alan & Lisa Becker
 Christine & Ronald Beehler
 Everett Begor III
 Mark Belanger
 Sally Belcher
 Janet & Maurice Beliveau
 Eric & Martha Benson
 Cynthia Berend & David Arigoni
 Dean Bertoldi
 Paul Bessey & Susan Libby
 Harvin & Rita Betournay
 Karen Gordon Betournay & David Betournay ♦
 Nancy Bianchi Miller & James Miller
 Barbara & Justin Bielagus
 Elizabeth Birnie & Daniel Calegari
 Dan & Marcia Blakeman
 Geraldine & Robert Blier
 Carolyn & Michael Borkowski
 Darrin & Deborah Bosquet
 Betsy Bower
 Susan Bowler
 Jane & Gerard Boyer
 Doris Brand
 Todd & Joan Breault
 Celine Briand
 Donna Briggs & Bill Lucius
 Dr. Amy Bright
 Amy Bright
 John & Theresa Brockelman
 Coleen Brolin-Eddy
 Jan Brown
 Craig & Kimberly Brown
 Randall & Laura Browning
 Patricia & John Buben, Jr.
 Michael Burke
 Zuzana & Christopher Buzzell

Deidre Byers & Steve Schofield
 Michelle Camacho
 Albert Campagna
 Robert & Kristin Campbell Jr.
 Justin Campbell
 Catherine Canady
 Anne & Joseph Canty
 Esther Capes
 Ms. Carballiera's Fifth Grade Class
 Ronald Caron & Elaine Minnehan Caron
 The Carrier Family
 Lynette & John Cartmill
 Janet Cartmill
 David & Susan Cassidy
 Robert & Dale Castanino
 Claire Castanino
 Elizabeth Castro
 Lynda Caza
 David M. Charles
 David & Dianne Cherwin
 Dorothy & Arthur Chicaderis
 Anthony & Katherine Chismark
 Heather & Michael Ciardelli
 George & Judy Claborn
 Shan Clark
 Jane Cleary
 James & Marguerite Coffey
 Peter Cofran
 Christine Cole
 Virginia Collins
 Claire & William Collins
 William Collins Jr.
 David & Kelly Conte
 Kelly & William Cornwell
 June McGrath Coronis & Mark Coronis
 Sarah Costello
 Jack & Kathy Costigan
 Kathleen Coughlin
 Donald & Cecile Couturier
 The Cowan Family
 Irene, Richard, Douglas Cox
 William & Denise Cunningham
 Michael Cyr
 Craig Daingerfield
 Thomas D'Aprix, Jr.
 Maureen Dastous
 Richard & Julia D'Auria
 Ann Davis
 James & Julie Davis
 Allise De Smet & John Siemienowicz
 Cris Decato
 Shirley DeCoste
 Cameron Dejong
 Phillip & Lorraine Delorey
 Thomas & Colleen Desmarais
 Paul Dickson & Karen Hansen
 Richard & Ellen Diggins
 Antonia & John Dinkel
 Robert Dobzanski
 Brian & Joanna Donahoe
 John & Danuta Donovan
 Daniel Dorgan
 Glenn Doten & Linn Kurkjian
 Dr. Ronald Douville
 Wanda Downing & Mark Phillips
 Ruth Droescher
 George & Sandra Drolet
 John Dutra
 Pamela & Robert Easton
 Tom Medico & Tammy Eccard
 Sherry & Donald Edson

Claudette & Kenneth Edwards
 Anne & Gary Ekdahl
 Alan Eldridge & Susan Paraventi
 David Elliott
 June Ellison
 Wayland & Ann Elwood
 Mark & Callista Epstein
 Diane & Geno Eriquezzo
 John Erlman
 William B. Feindel III
 Kimberly Feindel
 Leonard Ficaró
 Carrie & Timothy Finke
 Kevin Fitzgerald & Marie Gross
 James Fletcher
 Maurice & Diane Fortier
 Dawn & Timothy Foster
 Carol & Robert Fournier
 Judith Frank
 Kenneth French
 Brian French
 Richard & Leah Fressilli
 Jennifer Fritz
 Larry Fry
 William Gagan
 Pamela & David Gagne
 Larry Gammon
 Cheryl & Mike Gardner
 Rachael Garvey
 Pamela & Scott Gauthier
 John & Joan Giese
 John Gimás
 Dr. Martin & Nadine Ginsberg
 Steele & Karen Gladston
 Priscilla Gladu
 Terry Glazier
 D Glynn
 Rod Glynn
 Helen & Kenneth Glynn
 Wayne & Laura Goldner
 Dr. Carroll-Ann Goldsmith
 Cynthia Goodenberger
 Leslie Gordon
 Michael Grages & Kristin Beltrami
 Glenn Grande & W. Wynn Welch Grande
 Elizabeth Granetz
 Norma & Mark Gruendike
 Stephen Guiheen
 Margaret & Richard Gunzelman
 Dick & Joanne Gustafson
 Dr. L. Guzzi
 Keith & Angie Haenel
 Robert Hagar
 Marjorie Sherwin Haggard
 Susan & Russell Haight
 Susan Hailson
 Margaret Haines
 David Hall
 Ross Hall
 William Hall & Rena Wagner
 Mark & Debra Hallett
 Joann Halloran
 Leslie & Peter Haltbakk
 Gerald & Bennette Hanauer
 Ann Louise Hankins
 Arnold & Barbara Hanson Jr.
 Robert & Nancy Hardy
 John & Camille Hargreaves
 Daniel & Cynthia Harrington
 Roberta Harrington
 Nancy & Bill Harris

Humane education—Number of towns served: 24. Top 3 towns: Manchester (44%), Bedford (14%), Salem (10%).

Dawn & Gary Hartford
 Sherry & Paul Harvey
 Philip & Jill Hastings III
 Peter Haverhals
 Cathleen Hayner
 Brian & Linda Hayward
 Nancy & Thomas Head
 James & Lorraine Headd
 Kevin Healey
 Donna Hebert
 Dr. Normand & Therese Hebert
 Priscilla & William Hendricks
 Marilyn & J. Michael Hickey
 Ashlyn Holland
 Era & Albert Holmes
 Georgia Hrepatsos
 Dr. J. Beatty & Susan Hunter
 Claudia Iannotti
 William & Marjorie Israel
 Christina Jacobs
 Cynthia Jacobson
 Jan Jaran-Teed
 Darryl & Marie Jennato
 Lennart & Anita Johnson
 Judith & Wayne Jolley
 Richard & Nancy Josephson
 Brian Jureka
 Gayle Jureka
 Mindy & John Kacavas
 Christine & Tom Kalantzis
 Kyle Kane
 Rochelle Kaplan
 Elizabeth Karagosian
 Mary & Glenn Kazanowski
 Howard & Janet Keegan
 Jane Keller
 Claudia Kelley
 Christopher Kelly
 Stephen & Roberta Kerekes
 Michael Kimball
 Gwenn Kirkwood
 Nancy & David Kocher
 Dorothy & Frank Krahenbuhl
 Leo & Barbara Davis Kulig
 Prithvi & Kala Kumar
 Barbara Labrecque
 Andrea Laforge
 Jan Langer
 Talia Lanzillo
 Ruth Lapidus
 Valmore & Dorothy Laplante
 Charlene LaPorta
 Donna Leavell & Pamela Hines
 Wilfred & Kathleen Leblanc
 Mary & Richard Lefebvre
 Jean Leone
 Eileen Lewandowski
 Keith & Deborah Lion
 Claire & John Livingston
 Stephanie Lloyd & Kenneth Fougner
 Leonard Lobao
 Nancy Lockhart
 Robin & Michael Logel
 Kathleen & Matthew Lombardi
 Pauline & Norm Longval
 Roger & Deborah Love
 Joseph & Patricia Lovejoy
 Benjamin Loveless
 Stephen Lucas
 Liga Lundvall
 Ian & Susan MacDermott

Laverne MacInnis
 Keith & Gwynneth ♦ MacKenzie
 Heidi MacLean
 Susan MacMulkin
 Jenna Maida
 Richard & Susan Mailhot Jr.
 Jennifer Makris
 Tracy Mancuso
 Pauline & James Margetou
 Eike Mario
 John & Ruth Mason
 Claire G. Mason
 Rosalie & Louis Masse
 Noreen Matthews
 Jeanne & Joseph McCabe
 Elizabeth & Lawrence McClendon
 Kathleen McDonald
 Matthew McGee
 J. Pat & Jean McGiffin
 Richard & Edith Mcgillen
 Mike McGinnin
 Eileen McGrath
 Bonnie McKellar
 Suzanne & Carl McMullen
 Franklin & Delia Medrick
 Susan & Paul Melanson
 Barbara & Richard Metivier
 Suzanne Mieso
 Barbara & Jeffrey Millar
 Mollie & Nelson Miller
 Evelyn Miller
 Karen Milo
 Doug & Stephanie Miville
 John & Peggy Mlcuch
 Elizabeth & Constantino Mokas
 Sandra Molloy
 Robert Moody & Amanda Bentley
 Wendy & Riley Moores
 Gertrude Morgan
 John & Joanne Morganstern
 Steven & Andrea Morgan-Vandome
 Julia & Christine Morley
 Nancy Rutledge Morris & Garrett Morris
 Elizabeth Morrisette
 Matthew Murby
 Amanda & Gerald Murchison
 Amy Muscott
 Susan Nakos
 Dr. Charles & Joan Neal
 Jeffrey Nelson
 Douglas & Heidi Newbold
 Susan Nixon-Bradford & Mike Bradford
 J. Nolan
 Albert & Theresa Normand
 Frank Norris
 Anne Norris
 Chester Nowakowski Jr.
 Anyce Noyes
 Randall Nutt & Sharon McMillin
 Gordon & Nena O'Brien
 John O'Connor
 Mary Orzechowski
 Marilyn & Bernard Otterson
 Gregory & Rachel Owens
 Michael & Joyce Page
 Robyn Pallis
 Wayne & Gail Palmer Jr.
 Scott & Deborah Palmer
 Charlene & Anthony Palmisano
 Gerard & Rachel Paquette
 Mark & Kathryn Parenti

Diane Pars
 Mark & Donna Patten
 Cheryl & George Paul
 Mary Paveglio
 Nancy Pease
 Herbert & Sandra Pellerin
 Ralph & Barbara Perkins
 Richard & Susan Peterson
 Dale & Kathy Petts
 Richard & Susan Phaneuf
 Anonymous
 Cynthia Phillips
 Ron Piecuch
 Roger & Joanne Pinchard
 James Plante
 Ashley & Bruce Pratt
 Denise Pustizzi
 Sharon & Merril Pyes
 Oliver & Laurel Radke
 Tammy & Scott Rafferty
 Robert Ramos
 Janie & Rob Redman
 Nancy & Barry Reinbold
 Nicholas Reis
 Alan & Kristen Retter
 Lisa & Ken Richard
 Bette & Byron Riley
 Michael & Jennifer Robidoux
 Audrey Robinson & Robin Maloney
 Jon Rochlis
 Nancy Rodgers
 William & M. Ann Rogers
 Mary Ann & John Rolfe
 Janet Romaine
 Deborah & Randolph Roody
 Erin Rooney
 Gloria Roussele
 Lisa & Andrew Roy
 Michael Ryan & Robin Steiner
 Gail & Kenneth Sandler
 Cynthia Sarnoski
 Quentin Schappa
 Darlene Schmidt-Brandt & Bill Brandt
 Jeffrey Schroeder
 Julien Selles
 Scott Setzler
 Judith Sevon
 Dr. Christopher & Patricia Shapley
 Karen L. Shaughnessy
 Dr. Joseph E. Sheehan
 Sandra & Albert Sheppard
 Alfred & Dolores Silk
 Gail & Todd Silva
 Valerie & Daniel Silva
 Margaret Sisneroz
 Gary Skantze & Judith Grant
 Dan & Deb Sklar
 Pamela Skovira & Roland Roberge
 Thomas Skrzyszowski
 K. Susan Smith
 Victoria Smith
 David & Debra Smith
 Linda Sobel & Daniel Johnson
 Karen Solimine
 Cheryl Spaulding
 Claire St. Onge
 Michelle & Frank Stama
 Susan & John Stamos
 Debra & Bruce Stanas
 Rose-Marie Stanton
 Sally & Mark Stebbins

Kelly Steele
 Barbara Steele
 Brian & Carmen Stefanik
 Robert & Meredith Stephens
 Barbara Uhl Stewart
 Jennifer Stitt
 Richard Stockdale
 Vernon & Geraine Stocker
 Kelly & Bruce Stoller
 Kimberly Stumpf
 John Surak
 John & Dorothy Sweeney
 Margaret & Brandin Swisher
 Andy Tabor
 Janice Tardif
 Lisa Teague
 Dr. Robert J. Terzian
 Michael Theriault
 George Thomas
 Hon. O. Alan Thulander
 Kathleen Thurston
 Alana Tobin & Jeffrey Reichenthal
 Michelle & Matthew Toolin
 Carl & Lana Tortolano
 David Totsch
 Carole Tremblay
 Simeon Tripleton Jr. & Pauline Roberts
 Ronald & Paula Troie Jr.
 Charles & Barbara Trudeau
 Lynn & Drew Tucci
 Neil Tullis
 John Tupper
 Karl & Rose-Marie Turgeon
 Catherine & Warren Turner
 Ardyth & Robert Vachon
 Robert Vachon
 Barbara Van Raden
 Carol Viens
 Martha Wadleigh
 Mary Lee & Ron Wagner
 Frank & Lynn Waller
 Crystal Waller & Marc Suprenant
 Anna Wallich
 Hilary & Richard Walter
 Ashley Ward
 Gary & Debra Warren
 Jennifer Washburn
 Mark Webster
 Ann & Ron Weikers
 Elaine Weinrich
 Ralph Weir
 April & Ted Weismann
 Honey Weiss & David Lewis
 Thomas Welch
 Herbert & Pauline Wenzel
 Jane & David White
 Barry & Jannette White
 Joyce Whiting & Chris McMahon
 Tina & Robert Wierpert
 Roxanne Wilson
 Town of Windham
 Caroline & Michael Winn
 Carrie Winn
 James & Becky Wojcik
 Judith & Arthur Woodbury
 Julie Woodward
 Michael & Nicolette Wright
 Pamela Wright
 Julie Wright
 Susan Wrисley
 Joseph & Paula Wudyka

Humane education sessions: 296. Children/teens reached: 9,927. Adults: 2,936 (Includes adult care programs).

Suzanne Wyman
Harold & Laurette Young III
Joann Zall
Craig & Kathy Zamoida
Patricia & Robert Zeamans

ORGANIZATIONS

Leaders (\$5,000 and above)

Centrix Bank & Trust
Great NH Restaurants Inc.
(T-BONES & CJ's)

Champions (\$2,500 - \$4,999)

Clear Channel
GT Solar Incorporated
Hollis Veterinary Hospital, PLLC
Riverstone Resources, LLC
William Steele & Associates, PC

Advocates (\$1,000 - \$2,499)

Absolute Title LLC
Ameriprise Financial
The Animal Hospital of Nashua, Inc.
Bedford Pharmacy
Ferrotec (USA) Corporation
Hill's Pet Nutrition
IncrediBREW & Grape Time Winery
Manchester Motor Freight
Passaconaway Country Club
Professional Pet Sitting Etc.
Third Party Administrators
Verizon Wireless Arena
Visual Persuasion, LLC

Partners (\$500 - \$999)

Amoskeag Pet Supply, LLC
Anonymous
Anonymous
Best Friends Animal Hospital
Devine Flooring
Ecosmith Recyclers Inc.
Ipswich
Lockridge Animal Hospital
Milford Veterinary Hospital
NH Plastics, Inc.
Ponemah Veterinary Hospital
Queen City Rotary
Souhegan Pet Supply, LLC
Wholistic Pet Organics
WMUR 9

Friends (\$100 - \$499)

A Market Natural Foods
Accent Tile Company
Alapage
America's Credit Union Museum
Amherst Animal Hospital
Amherst Middle School
Ansell & Anderson
Associated Architectural
Autos 4 Animals
Backus, Meyer & Branch, LLP
Best Buy
Bonneville & Son Inc
Caring Hands Animal Hospital
Caryn's Coppertop Creamery
Caryn's Country Convenience, LLC
David R. Craig, Attorney
Crittter Control
Daniel Webster Animal Hospital
Derry Animal Hospital

Derryfield School
Down East Antiques & Collectibles
Electric Boat Corporation
FairPoint Communications
Franklin Plumbing & Heating
Granite State Podiatry
Halverson Insurance Group
Hannaford Brothers
Heartstings Animal Photography
Independent Insurance Agents &
Brokers of New Hampshire
Infant Jesus School
Joe Gauci Landscaping, LLC
Jonathan's Jewellery
Kingston Auction Company
Kocher & Company, Inc.
Manchester Alignment Center, Inc.
Manchester School District
McLane Graf Raulerson &
Middleton, PA
Memorial Elementary School
Merrimack Building Supply
Milly's Tavern
Neighborhood News, Inc.
New Hampshire Parrot Head Club
Northeast Delta Dental
Northside Animal Hospital
Northway Bank
Orr & Reno Professional Association
Pelmac Industries
Pet Stop
Plymouth Regional High School
Boosters Club
The Scratching Post Inn
Skillsoft
Slawsby Insurance Company
Specialized Group Psychotherapy
State Farm Insurance Agency
Success Summits, LLC
Summit Financial Corporation
Trading Faces
U Dirty Dog U
Unitil Customer Service Center
Vanasse Hangen Brustlin, Inc.
Velcro USA Inc
Whiskey Girls LLC
White Home Collections
Woodbury Hill Partners

WORKPLACE MATCHING

Aetna Foundation, Inc.
AIG Matching Gifts Program
Allstate Giving Campaign
American Express Company
Employee Giving
Ameriprise Financial Employee
Gift Matching
C.R. Bard Foundation, Inc.
Goodrich Foundation
Hewlett-Packard Company Foundation
Highlands Wildlife Rehabilitation Center
Liberty Mutual Foundation
Motorola Foundation
The Plymouth Rock Foundation
The Prudential Foundation
Matching Gifts Program
Saint-Gobain Corporation Foundation
Verizon Foundation
Washington Mutual
Matching Gifts Program
Wellpoint Associate Giving Campaign

FOUNDATIONS

ASPCA
Build-A-Bear Workshop Foundation
Charity Blast LLC
Community Check
Fidelity Charitable Gift Fund
Foundation of New Jersey
Hunt Foundation
New Hampshire Charitable Foundation
—Manchester Region
New Hampshire Charitable Foundation
—The Millar Fund
The Pegasus Foundation
Perkins-Prothro Foundation
Petco Foundation
PetSmart Charities
Target Foundation
Vanguard Charitable Endowment
Wal-Mart Foundation
Watts Family Fund of the Community

ESTATES

Estate of Eliza B. Green
Estate of Frank Green
Estate of Shirley Kaddy
Estate of Helen Mrozek
Estate of Virginia B. Smith

THE HUMANE FUTURE LEGACY SOCIETY

These individuals have notified us that they have included the League in their estate plans:

Anonymous
Dante Bartolomeo
Barbara Brown
Pamela & David Charron
Aldis J. Christie, Jr.
Bob & Carol Fournier
Roy & Martha Gilson
Dr. Denis & Sheryl Hammond *
Ruth Jamke
Jim Hendrix * & Cyndi Carr
Chris Houps
William & Marjorie Israel
Steve & Pam Patterson
Mitzie Kocsis
Gloria MacVane
Susan & Ian MacDermott
Linda McCarthy
Stan Miastkowski & Kathe LaRiviere
Bill & Sheila Steele *
Carolyn Todd

IN-KIND SUPPORT

In addition to monetary donations, the League receives in-kind support from many people and businesses.

The following were especially generous with their time, talents or products:

Aurvara Salon
Baker Newman Noyes, LLC
Todd Berkowitz
Best Friends Animal Hospital
Thomas & Dana * Boucher
Richard & Cheryl Cesati
The Crazy Canine
Daniel Webster Animal Hospital
Walter Donovan
Ann & William Duschatko
Lissa * & William Foote

Anne & Boyce Greer
Hannaford Supermarkets
INEX Capital & Growth Advisors
Roger * & Francine Jean
Joe Gauci Landscaping, LLC
Jonathan's Jewelers
Dr. Lori Gordon Ledeux
Lockridge Animal Hospital
Gloria MacVane
Cylea Mancuso
Tracey Mancuso
Linda McCarthy
Merrimack Veterinary Hospital
Milford Veterinary Hospital
Robin * & Peter Milnes
Hillary & Jim Myers
New England Document Systems
Northside Animal Hospital
Charlene & Tony Palmisano
Pawsitively Natural K-9 Treats
Pfizer, Inc.
Ponemah Veterinary Hospital
Singer Family And Merchants
Spay ASAP
Automotive Group
John & Melody Taft
T-BONES & Cactus Jack's
Trading Faces
Visual Persuasion, LLC
Jennifer Whitlock
Wilton Animal Hospital

Due to space limitations, we were not able to print a complete list of all 2008 donors. For a complete list of donors, please visit our website at www.rescueleague.org.

We do our best to list all of our donors accurately. If you feel there is a mistake in your record, please contact Marianne Jones at **603.472.DOGS** or marianne@rescueleague.org to have it corrected.

BOARD of DIRECTORS:

Officers:

Lucy Gobin - *Chairman*
Roger Jean - *Vice Chairman*
Fred Weismann - *Treasurer*
Robin Milnes - *Secretary*
Caroline Boyd - *President & CEO*

Members:

Dana Boucher
Jennifer Eber
Lissa Foote
Jim Hendrix
Meryl Levin
Anne Rzegocki
Lisa Kennedy Sheldon
Rob Smith
Karen Tebbenhoff

Terms Completed in 2008

Linda Hamada (1999 - 2008)
Sheryl Hammond (1999 - 2008)
Sheila Steele (2002 - 2008)

We are fortunate to have a Board of Directors that is completely committed to our mission and which demonstrates that commitment through 100% participation in donating to the League.

Total animals rescued through cruelty program: 214. Dogs: 11, Cats: 196, Small animals: 7.



Animal Rescue League of New Hampshire

545 Route 101 • Bedford NH 03110

www.rescueleague.org

Non Profit Org.
US Postage
Paid
Manchester NH
Permit 1111

Please do not throw this out! Leave this Annual Report at your doctor's office, gym, lunch room or coffee shop. To protect your privacy, please clip out or blacken your name and address below.

Camp Critter:

Animal Lovers Ages 7 to 11 Should Register Now!



The humane education program here at the League continued to grow in 2008 with the addition of our first summer camp program. Camp Critter, which was named by the attendees of the first week of camp, ran for a week each in

July and August. The camp proved to be a great success with some of the kids telling us that they wanted to spend the night!

Camp Critter was run by our humane educator, Diane Frost. She planned two fun-filled and educational weeks for the campers including information on wildlife, dog bite prevention, kindness to animals, and animal behavior. Each day revolved around a particular animal theme and the children participated in hands-on time with the animals, arts and crafts, games and more. The kids even got to be part of our bi-weekly TV show, For Pets' Sake. The camp is a great opportunity for children to become more involved with animals and with the League.

Due to the success in 2008, camp will run for a total of four sessions in 2009. The first session will run during the April vacation week and will be for children between 8 and 10 years of age. Three summer sessions for different age groups will run during July and August.

Camp runs Monday through Friday, from 9am to 3pm.

Cost per camper is \$150.00 for the full week.

If you are interested in registering your child, please contact marianne@rescueleague.org or call us at **472-3647**. Please note that space is limited and the camp is in high demand, so register early to ensure a place for your child!

Camp Critter Calendar

DATE	AGES
April 27th – May 1st	8 to 10
July 13th – July 17th	7 to 8
July 27th – July 31st	9 to 10
August 10th – August 14th	11

Spaces go quickly, so please register your child soon!